

LEBANON

GROUNDBREAKING GLOBAL INNOVATION IS HERE.

Build Faster. Expand Further. Reach Higher.

LEAP's "live, work, play" concept sets itself apart from other large-scale developments by being a state-driven strategy aimed at captivating a large-scale audience. Featuring abundant land and utility resources, LEAP aims to attract and retain a highly-skilled workforce. By designing an ecosystem for the betterment of target industries, such as life sciences, ag tech, microelectronics, clean tech, and battery innovation, companies in the LEAP Lebanon Innovation District will become the "employers of choice."

BY THE NUMBERS:

9,000+

acres ready to parcel for manufacturing, R&D facilities, or corporate campuses

50+

leading biotech, pharmaceutical and life sciences companies within 30 miles

#1

Indiana's top-ranked business environment offers an innovation friendly regulatory framework

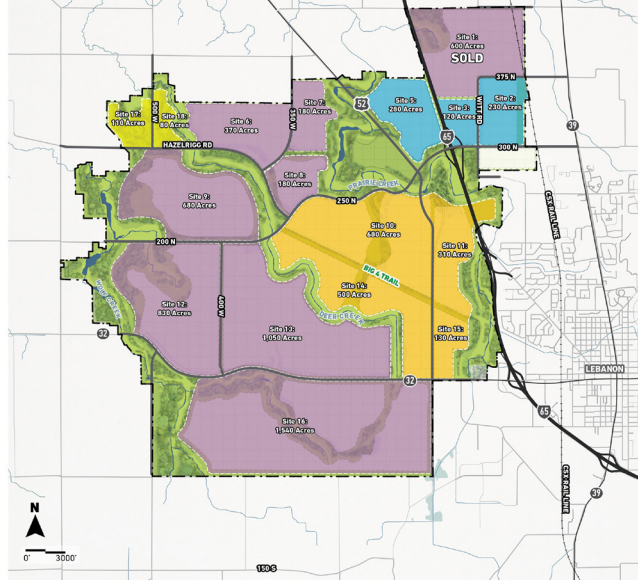
#1

home to top companies including Roche, Dow, PPG, BASF, Eastman Kodak, and Vertullus

#5

Carnegie R1 Purdue University, nation's 5th most innovative campus (U.S. News)

PROPOSED LAND USE



LET US HELP YOU NAVIGATE THE SITE SELECTION PROCESS. CONTACT US NOW.



Anastasia Geminden Lowe
Site Marketing & Lead Generation
ageminden@iedc.in.gov
463.214.0479